

TECHNOLOGY **QUALITY**

CREATES FUTURE

ASSURANCE PARTNERSHIP



Complete solution for mismatch repair protein detection

Comprehensive improvement to promote the standardization of MMR testing



Celnovte Biotechnology Co., Ltd
China

Zhengzhou : 1 Cuizhu Street, Bldg 109, Hi-tech District, Zhengzhou, Henan, China

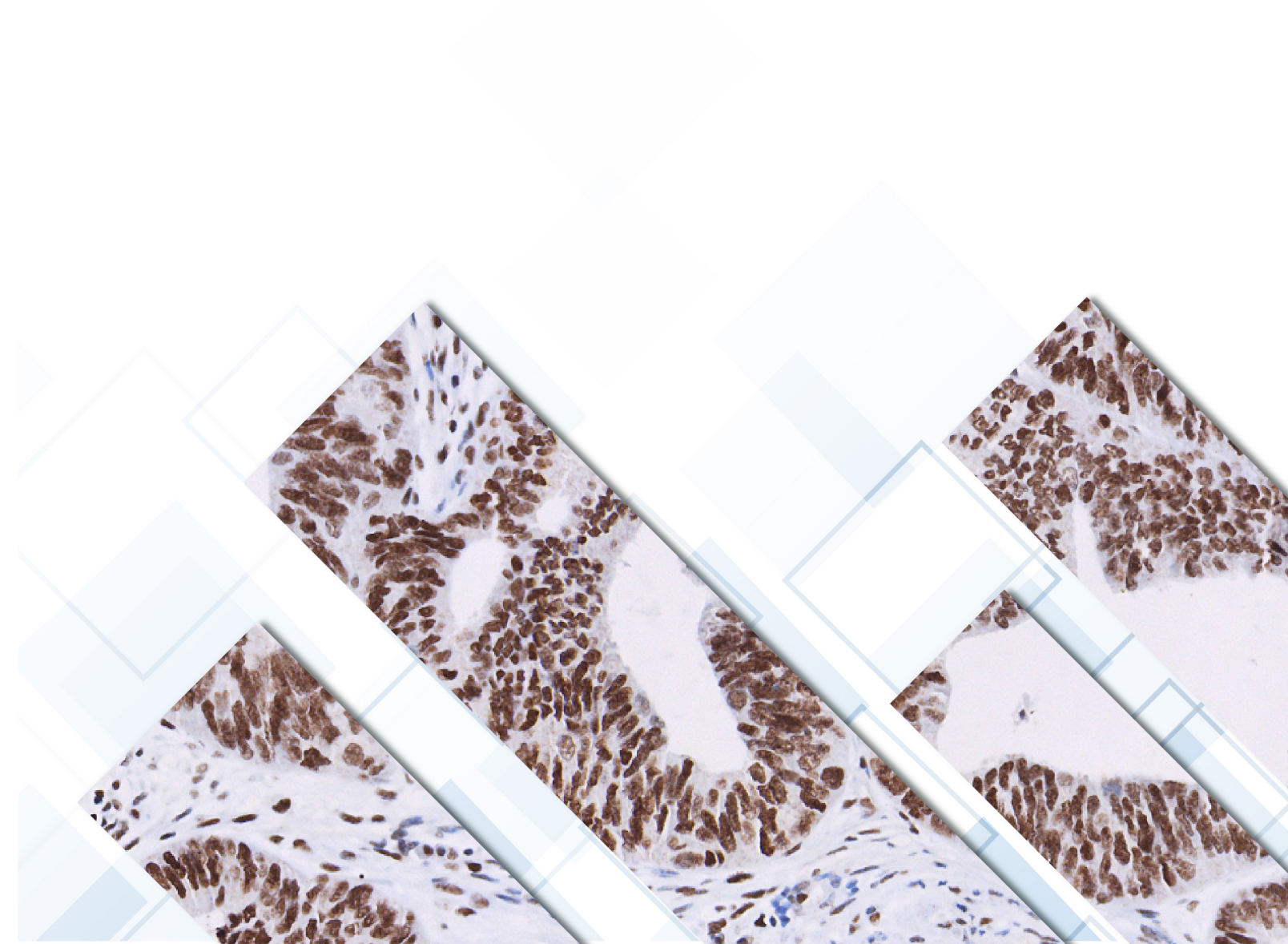
Shenzhen: Building 2, Suite 103, Space Industrial Park, Bao'an District, Shenzhen, Guangdong, China

Suzhou : 188 Fuchunjiang Road, Building 7, Suite 701, High-tech Zone, Suzhou, Jiangsu, China

USA : 9430 Key West Ave, Suite 150, Rockville, MD 20850

Phone : +86-371-5659-6916

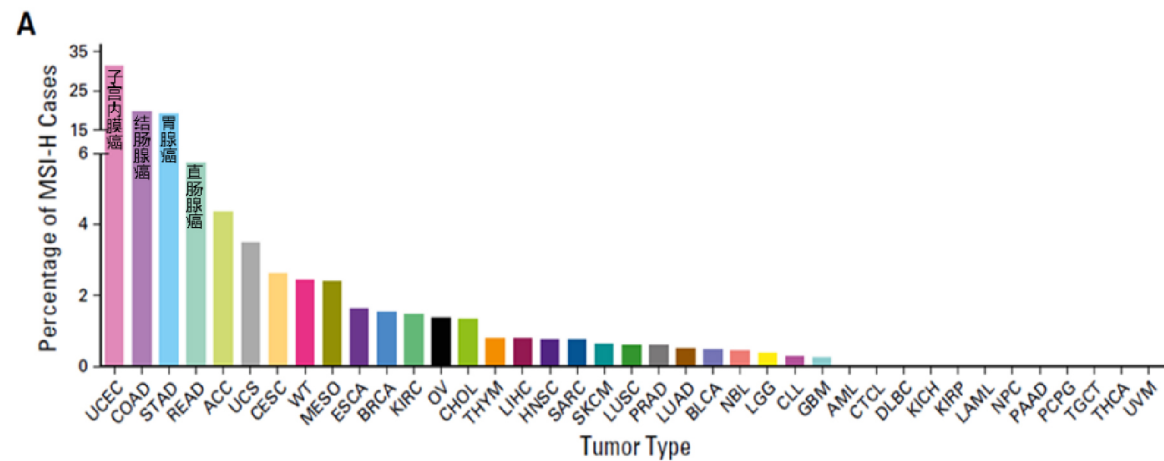
Website : www.celnovte.com



Introduction to MMR/MSI

Microsatellites are short tandem repeats distributed throughout the genome and are highly mutable. MMR is a mismatch repair system. When MMR is defective, insertion or deletion will occur during the replication of microsatellite fragments, which is called microsatellite instability (MSI).

MSI is related to the occurrence of various tumors, especially colorectal cancer, gastric cancer, and endometrial cancer.




The clinical significance of MMR/MSI detection in different tumors

Tumor type	Clinical significance			
	Lynch syndrome screening	Prognosis	Predicting the efficacy of adjuvant chemotherapy	Predicting immunotherapy efficacy
colorectal cancer	✓	✓	✓	✓
endometrial cancer	✓			✓
stomach cancer	✓	✓	✓	✓
small bowel cancer	✓	✓		✓
urothelial carcinoma				✓
pancreatic cancer	✓			✓
cholangiocarcinoma				✓
prostate cancer	✓			✓
esophageal cancer				✓
ovarian cancer				✓
hepatobiliary tumors				✓
breast cancer				✓
cervical cancer				✓

Complete solution for four tests of mismatch repair proteins


Celnovte's new MMR detection solution is a complete solution that integrates antibodies + secondary antibody detection systems + immunohistochemical staining platforms + staining procedures. It ensures the compatibility of primary antibodies, secondary antibodies and equipment, makes it more suitable and convenient to use, comprehensively improves chromatin quality, provides a more standardized staining scheme for pathological diagnosis, and is committed to the accurate diagnosis of tumor pathology.

Comprehensive improvement to promote standardized testing of MMR




Four antibody combinations

High-quality, high-sensitivity antibodies are selected; four antibodies are integrated for easy use.




Dedicated secondary antibody system

Newly upgraded dedicated secondary antibodies with higher sensitivity.



Standardized verification procedures

Design the staining procedure by combining the characteristics of primary and secondary antibodies; verify it with multiple tissues to ensure the consistency and accuracy of staining.



Efficient and stable detection platform

Applicable to CNT360/CNT330 fully automatic immunohistochemical staining platform. accuracy of staining.

Staining Images

