



CNT360

Full-automatic IHC&ISH Stainer

Fast

High-throughput

Intuitive

Multi-functional



CELNOVTE

Email: info@celnovte-bio-tech.com

Phone: 401-209-4076

Website: celnovte-bio-tech.com

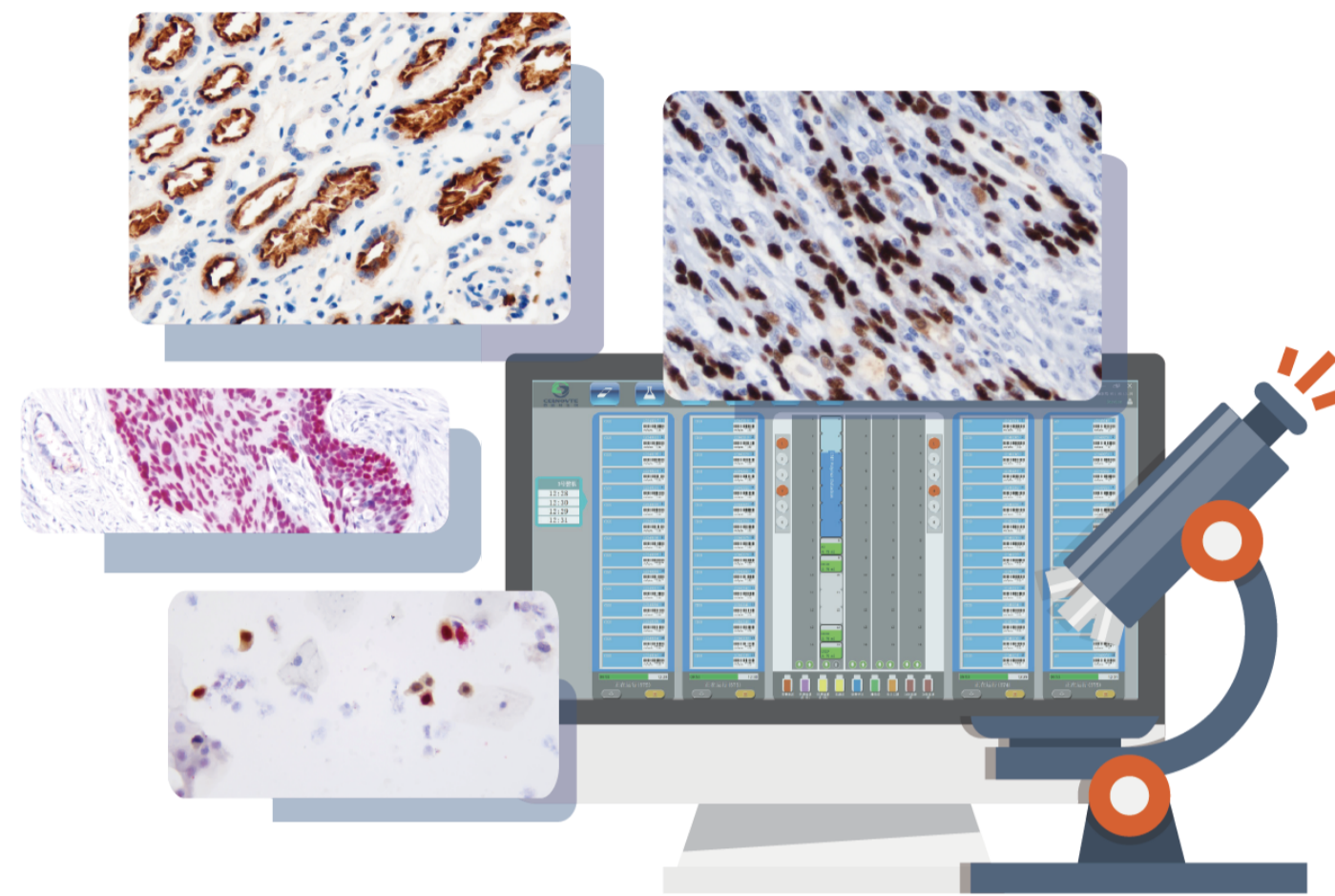
Address: 9430 Key W Ave, Rockville, MD 20850



CNT360

>> Summary

The one-stop solution for complete IHC&ISH workflow CNT 360 full-automatic IHC&ISH stainer is a powerhouse that performs multiple immunostaining protocols in a single platform, with outstanding fast turnaround time and high-throughput. Ready-to-use reagent kits and protocols are also supplied to ensure optimal staining results.



>> PRODUCT FEATURES

01

High-throughput

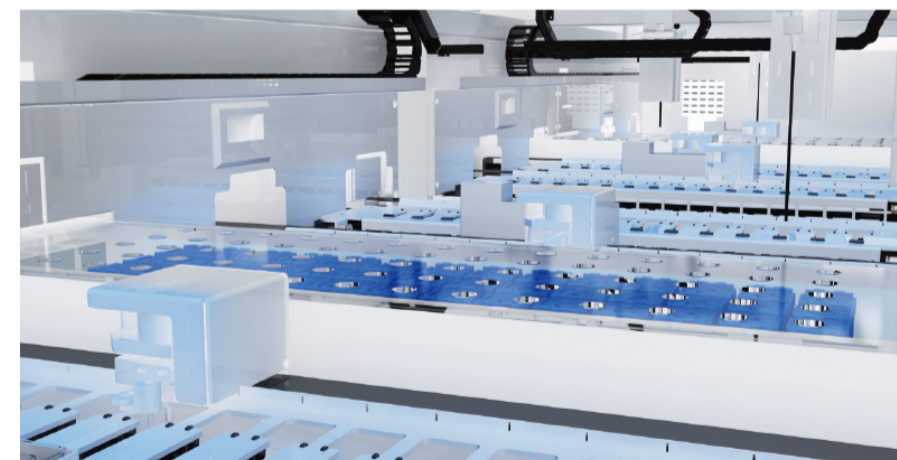
M1: 60 slides per run
M2: 120 slides per run



02

Fast turnaround time

2.5 hrs turnaround time, powered by robotic arms and bulk liquid trains,



03

Intuitive

Detachable touch-pads with remote control capability



Touch pads for daily operations, Detachable, remote control allowed

15 slides per tray, 4 trays per device, 60 slides per run

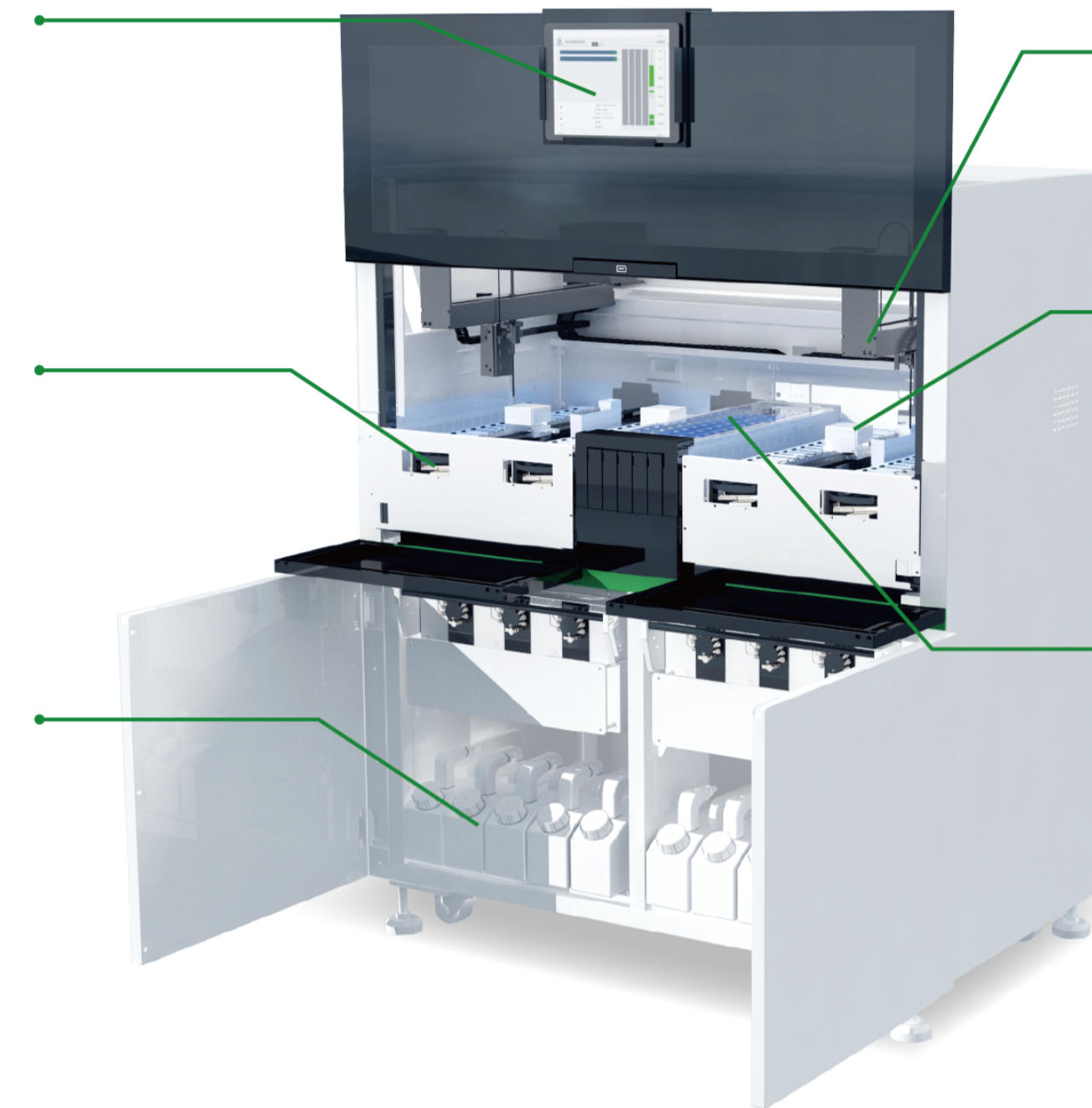
Bulk liquid containers, 4L capacity, easily detachable

CNT360 M1

2 main robot arms for streamlined workflow

Bulk liquid trains on each slide tray, greatly reduce turnaround time

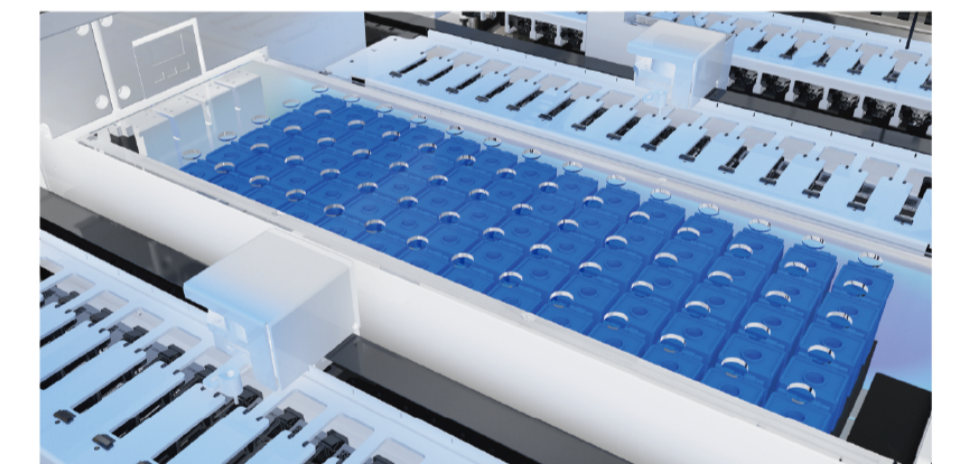
Motor-driven reagent chamber. 70 reagent containers distributed among 5 motor driven reagent trays can separately slide out with one screen-touch.



04

Temperature Control

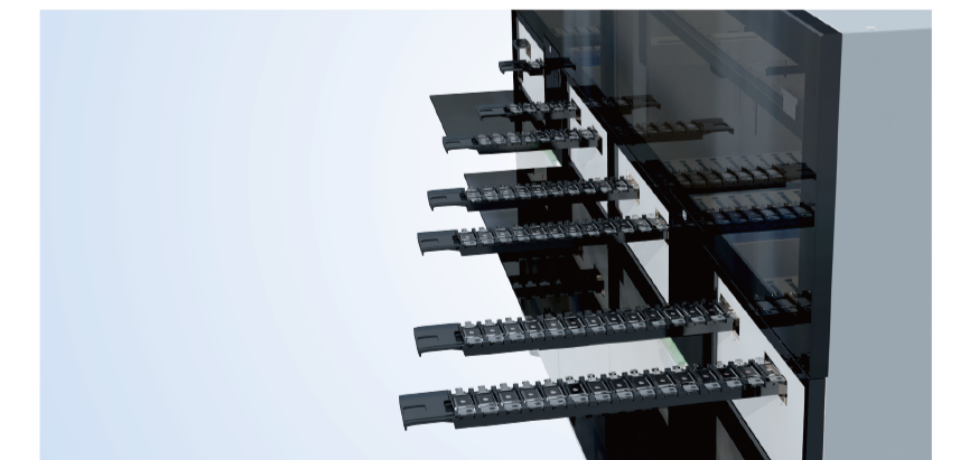
Constant temperature control for both slide chamber and reagent chamber



05

Flexibility in Slides and Reagent Placement

Allow loading and unloading of reagent and slides during protocol runs
Allow multiple protocols to run simultaneously



06

Multifunctional

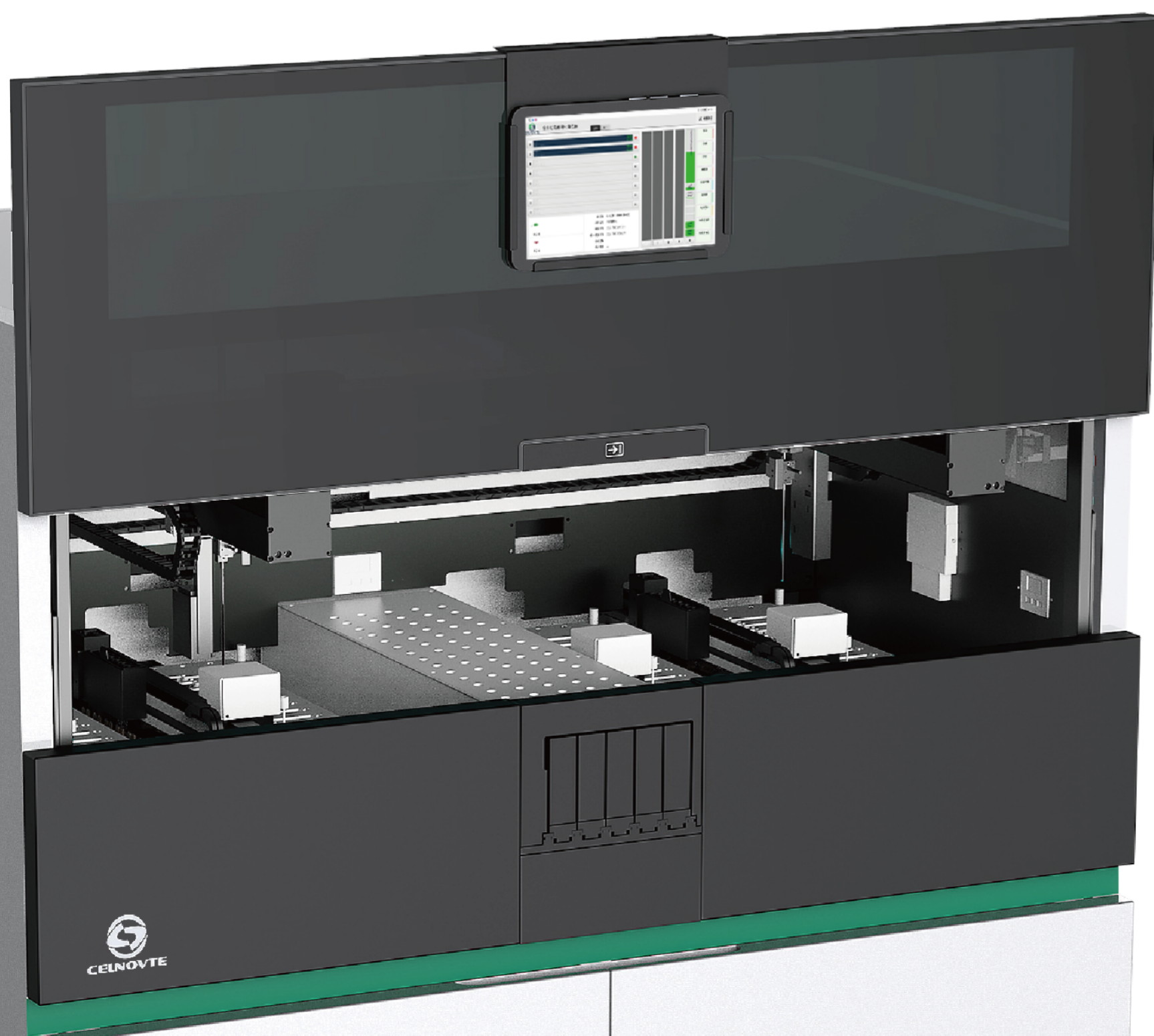
Support IHC, ISH, mIHC, ICC protocols





CNT360 [M1 / M2]

Full-automatic IHC&ISH Stainer



Product Specifications

General characteristics

Full-automatic	Baking, deparaffinization, antigen retrieval, blocking, detection, counterstain, for IHC, Multiplex IHC and ISH applications.
Intuitive software interface	Visual monitoring of reagent volume, running time, fault message.
Waste Separation	Non-toxic deparaffination solution. Separate waste containers for hazardous waste (DAB waste) and non-hazardous waste. Help labs save both time and money spent on waste disposal.
Slide Capacity	M1: 4 trays, 60 slides; M2: 8 trays, 120 slides
Turnaround Time	2.5hrs
Robot design	M1: 2 main robot arms, 4 bulk liquid trains M2: 4 main robot arms, 8 bulk liquid trains
Temperature control	The reagent chamber is maintained between 14~ 18C° The slide chamber is maintained between 25 ~ 30° for incubation, slides can be heated up to 100° for antigen retrieval
Dispense volume	Dispense volume can be adjusted between 100ul, 120ul, or 150ul for optimal staining results.
Reagent container capacity	7ml and 30ml
Number of reagent container spots	70 for M1, 140 for M2
Bulk liquid container	4L X 6
Waste containers	Non-hazardous, 4L X 3 harzardous, 4L X 1
Fluid probe	Stainless steel

Environmental requirements

Operating temperature	5C° ~ 35C° (41F ~ 95F)
Maximum heating energy output	2800VA
Dimensions (L x W x H)	1370mm x 820mm x 1600mm
Weight	400KG (M1) ; 800KG (M2)

Electrical parameters

Voltage and Mains frequency	AC 110V/60Hz or AC 220V/50Hz
Power consumption	2800VA