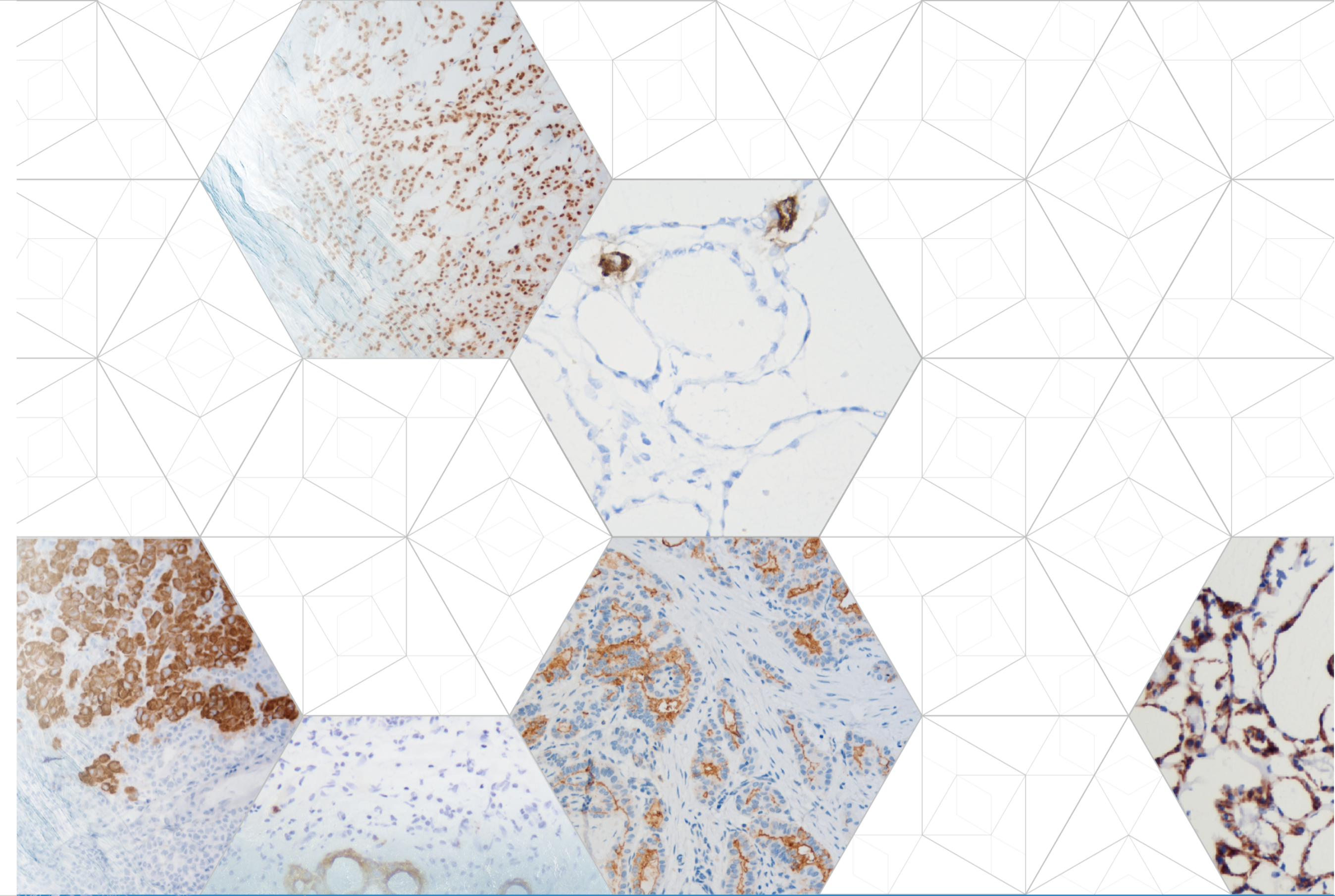


科技 倡导未来 诚信 连接你我
TECHNOLOGY HONESTY
CREATES FUTURE BONDS PARTNERSHIP



Intra-operative Frozen-Section IHC Products



CELNOVTE

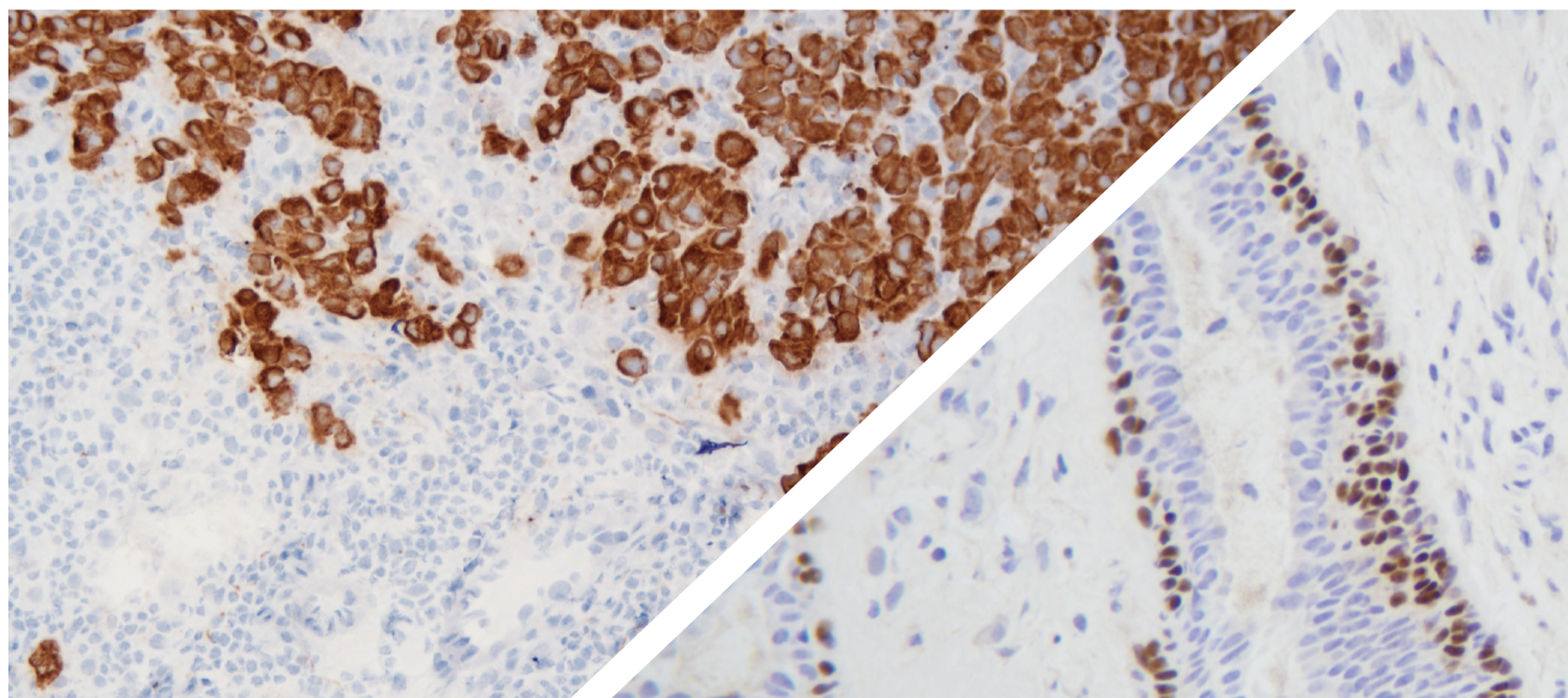
Email: info@celnovte-bio-tech.com

Phone: 401-209-4076

Website: celnovte-bio-tech.com

Address: 9430 Key W Ave, Rockville, MD 20850





Catalog

Name	Lot Number	Species	Clone
AFP	FAM0010	Rmab	EP209
Bcl-2	FBM0010	Mmab	124
CD3	FCM0025	Mmab	C3E7
CD4	FCR0026	Rmab	C9E15
CD8	FCM0027	Mmab	C8/144B
CD31	FCM0040	Mmab	1A10
CD34	FCM0050	Mmab	QEnd/10
CD44	FCM0060	Mmab	MRQ-13
CD68	FCM0090	Mmab	Kp-1
CD79a	FCM0100	Mmab	C4C4
CDX2	FCR0102	Rmab	C9E11
CgA/Chromogranin A	FCM0120	Mmab	C1C8
CK20	FCM0182	Mmab	Ks20.8
E-Cadherin	FEM0010	Mmab	GM016
mammaglobin	FMR0010	Mmab	EP249
GATA-3	FGM0012	Mmab	L50-823
GCDFP-15	FGM0020	Mmab	23A3
GFAP	FGM0030	Mmab	GA5
NapsinA	FNM0010	Mmab	C2C2
p16	FPM0012	Mmab	C9E1
p120	FPR0010	Rmab	C9E1
p40	FPM0020	Mmab	C3B4
p504s	FPR0030	Rmab	13H4
p53	FPM0040	Mmab	D0-7
PAX-8	FPM0051	Mmab	C12A32
PSA	FPM0070	Mmab	C2C12
S100	FSM0010	Mmab	4C4.9
SOX10	FSR0030	Rmab	EP268
Syn	FSM0040	Mmab	C9D11
TPO	FTM0030	Rmab	EP159
VEGF	FVR0010	Rmab	RBT-VEGF

Description

The unique PolyStacker™ detection polymer technology pushes the sensitivity of poly-HRP-Ab based detection system to its limit, thus drastically reduce the turnaround time of frozen-section IHC experiment to as short as 10mins.

Background

Currently, H&E stain is still the gold standard for intra-operative frozen section consultation. Nevertheless, Ice crystal artifacts formed during the tissue freezing process and its inevitably damage to the tissue morphology, causes difficulties in pathological examinations. Therefore, sole H&E examination often results in miss

diagnosis in case of microlesion, and clinic mistakes in case of atypical tissue morphology. In fact, 2019 national pathology lab quality control report of China indicates unsatisfied match rate of intra-operative H&E diagnosis and post-procedure FFPE IHC.

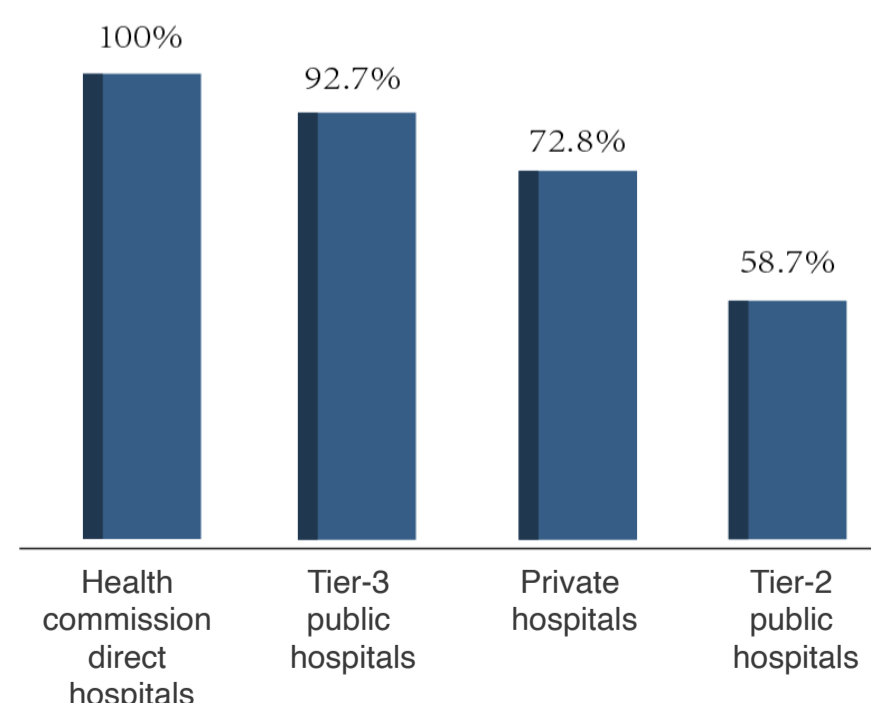
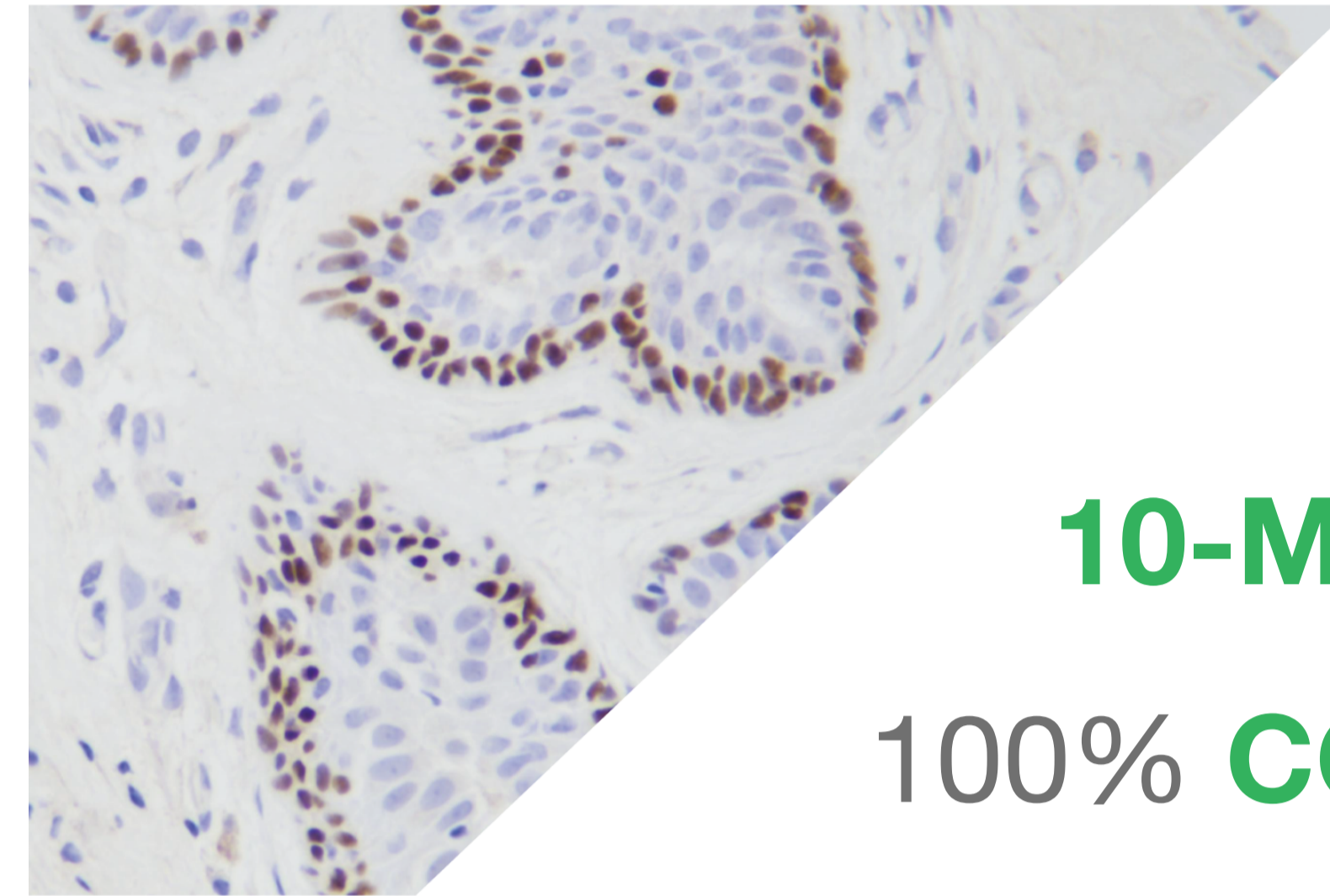


Fig: Match rates of intra-operative frozen section examination and post-operative FFPE examination - 2019 national pathology lab quality control report of China



Catalog

Name	Lot Number	Species	Clone
CA153	FCM0010	Mmab	DF3
Calponin	FCR0020	Rmab	EP798Y
Calponin	FCM0021	Mmab	C6A12
Calcitonin/CT	FCR0022	Rmab	Multi
CD45	FCM0070	Mmab	2B11&PD7/26
CD56	FCM0080	Mmab	C5A2
CEA	FCM0110	Mmab	C0L-1
CK CAM5.2	FCM0130	Mmab	CAM5.2
CK19	FCM0140	Mmab	A53-B/A2.26
CK5/6	FCM0161	Mmab	C6H1/C1C8
CK7	FCM0170	Mmab	OV-TL 12/30
CK8/18	FCM0180	Mmab	B22.1 & B23.1
CK高 (34 β E12)	FCM0190	Mmab	34 β E12
CK广	FCM0200	Mmab	AE1/AE3
Collagen Type IV	FCM0210	Mmab	C1V-22
EMA	FEM0020	Mmab	E29
Galectin-3	FGR0010	Rmab	EP412
Galectin-3	FGM0011	Mmab	C6C10
HBME-1/MC	FHM0010	Mmab	HBME-1
Myosin Heavy Chain	FMM0012	Mmab	SMMS-1
Ki67	FKM0020	Mmab	C3G4
p63	FPM0050	Mmab	C2C10
SMA	FSM0020	Mmab	C1C1
TG	FTM0010	Mmab	C6D6
TTF-1	FTM0021	Mmab	SPT24
TTF-1	FTM0022	Mmab	C7H7
VIM	FVM0020	Mmab	V9
WT1	FWM0010	Mmab	6F-H2

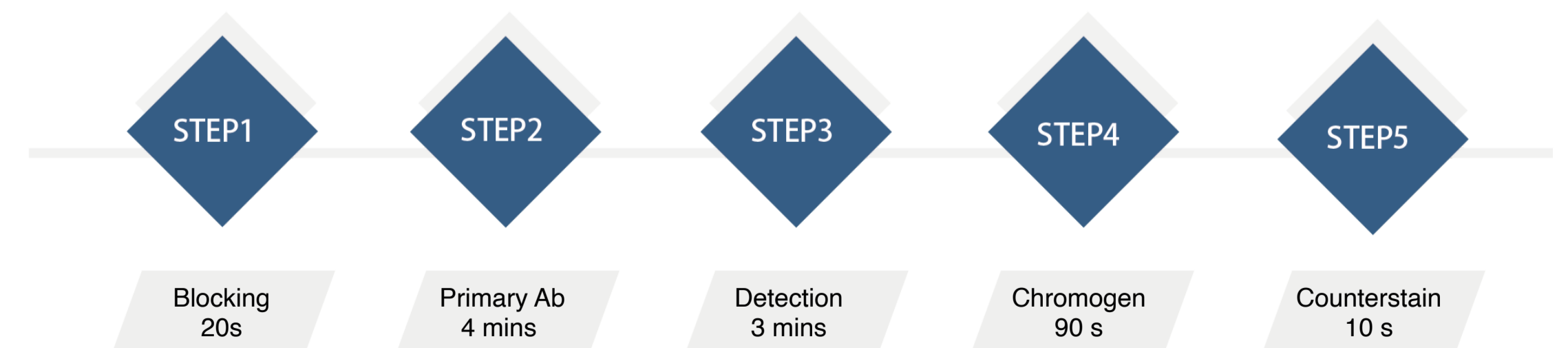


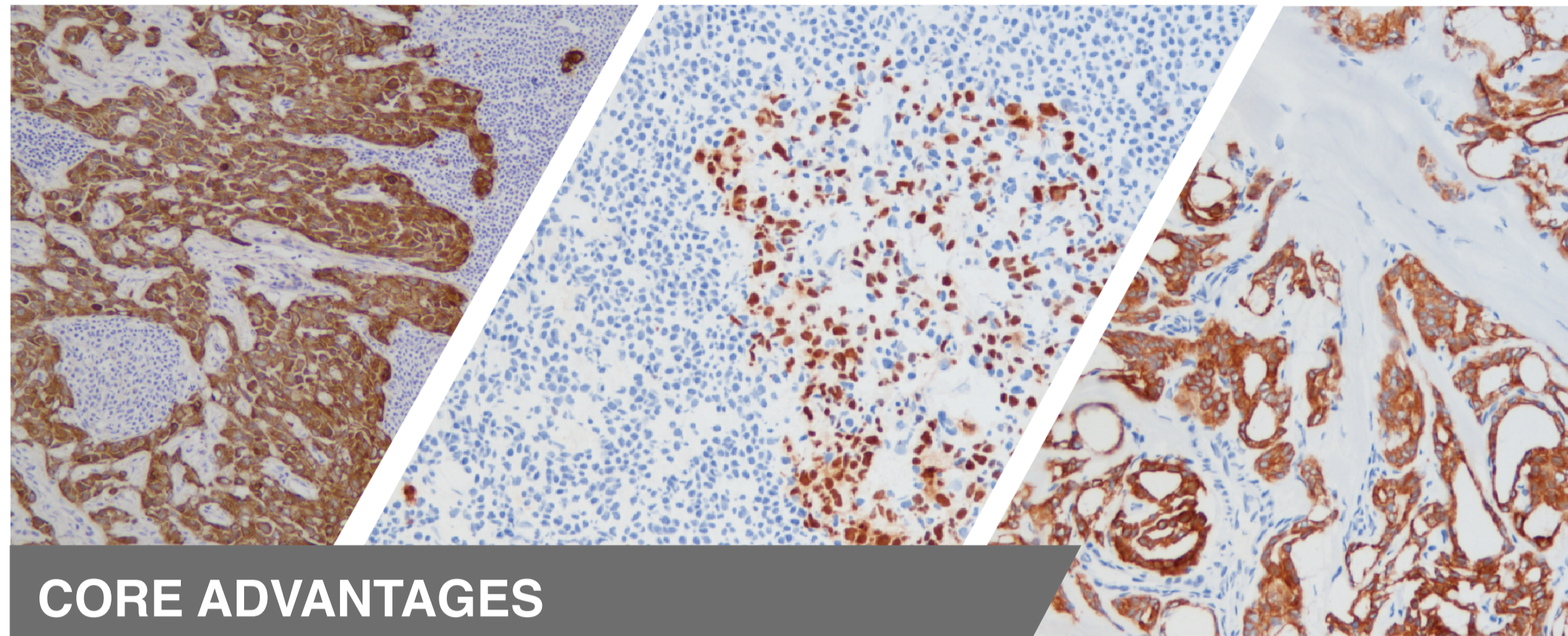
10-MINUTES IHC
100% CONFIDENCE

Clinic significance

- Rapid detection of tumor markers, reduce misdiagnosis from sole H&E examinations.
- Accurate diagnosis of challenging cases, such as metastatic microlesions and infiltrative microlesions. Reduce the false negative rate.
- Improve the match rate with post-operative FFPE IHC results.
- Assist in better surgical decision.

Protocol





CORE ADVANTAGES

1 2-step amplification system

Compare to competitor's 1-step detection method which utilizes Poly-HRP labeled primary antibody, our 2-step method is far more sensitive and delivers superior signal intensity with minimum background.

2 PolyStacker™ detection polymer technology

Proprietary PolyStacker™ technology allows orientation-specific attachment of Fab' fragment of IgG on the poly-HRP core based on micropolymer scaffolds. Removal of the Fc part of IgG avoids non-specific signal from endogenous Fc receptors, while the compact polymer structure induces its excellent penetration into all cellular compartments. Besides, the polymer is specially engineered to push its sensitivity to the limit, thus accommodates the 10-mins rapid staining protocol.

2 Quality control slides

Quality control slides for intra-operative frozen section IHC are provided to run in parallel with the test samples, which ensures reliable and consistent results.

4 RTU primary antibodies

Panels of specialized ready-to-use primary antibodies are provided for frozen section IHC applications.

5 Proprietary fixative

Our specially designed fixative provides crisp morphology enabling remarkable consistency between the frozen section IHC results and the post-operational FFPE IHC results.

6 Proprietary wash buffer

Our proprietary wash buffer formulation induces shorter wash cycles and cleaner background.

Intra-operative Frozen-Section IHC Products



10-MINUTES IHC
100% CONFIDENCE