



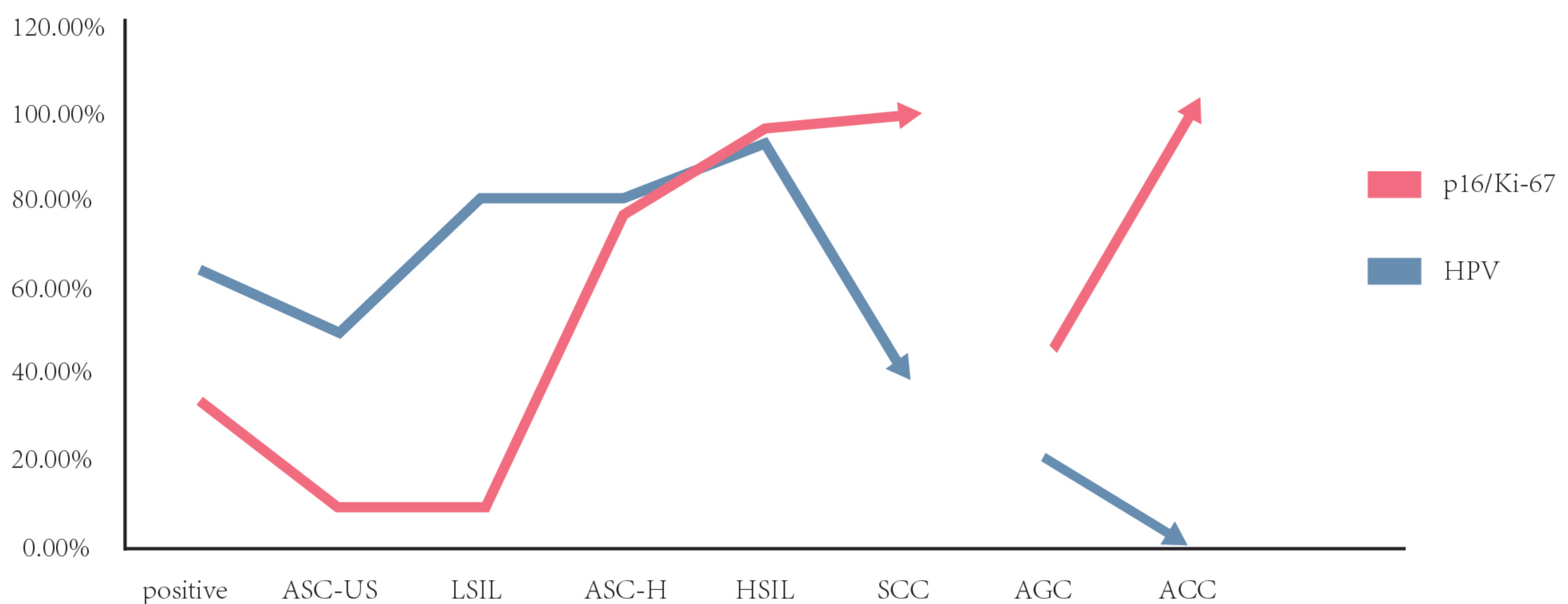
# p16/Ki-67 Dual Staining Detection Kit (Immunocytochemistry)

P16/Ki-67 dual staining detection reagent kit (immunocytochemistry) is an detection reagent for cervical cell screening shunt and diagnosis of cervical tissue samples. It adopts immunohistochemical dual staining detection and multi-antibody combination technology. Two antigen targets, p16 and Ki-97, can be detected simultaneously on the same sample tissue section by one staining process.

## 1 P16/Ki-67 Dual Staining Mechanism

In normal cells, P16 is a marker for resting cell, and KI67 is a marker for cell proliferation. The two are mutually exclusive and can not be expressed simultaneously. When p16 and Ki-67 are highly expressed simultaneously, it shows the disorder of cell cycle and cells will continue to proliferate. This strongly suggests that there are high-grade lesions.

**Cytological Detection Rate Contrast**



## 2 Recommended application range of the guideline

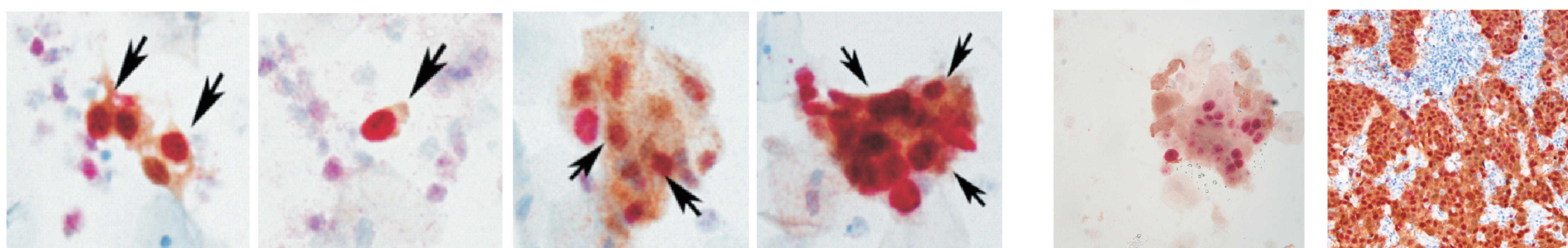
1. Differential diagnosis of atrophy, immature phosphating and repair cells
2. Suspected CIN2/ASC-H/CIN3 or below
3. Negative cytology/high-risk HPV positive samples shunted, for example: HPV16/18 positive, cytology only indicates ASC-US or below.
4. When HPV is used as a primary screening, high-risk HPV-positive patients other than HPV16/18 are shunted

## 3 Product Feature

1. Fixed with spray; short time; convenient
2. MicroStacker detection system with high sensitivity and strong specificity
3. Primary and secondary antibodies are cocktail mixed antibodies; easy to operate; high efficiency and excellent stability
4. Excellent staining results and easy to be interpreted

## 4 Staining Results

Positive interpretation: p16 and Ki67 are expressed simultaneously in the single or multiple cells on the same sample. The cytoplasm show brownish yellow, the nucleus show reddish brown. Interpretation is independent of morphology.



Dual staining positive cells: the cytoplasm stained brownish yellow and the nucleus stained red (marked by the arrow)

p16 & Ki67 cervical cells smear p16 & Ki67 cervical tissue section

## 5 Kit Components

Code	Name	Components	Specification
SD9001	p16/Ki-67Dual Staining Detection Kit (Immunocytochemistry)	Reagent A: peroxidase blocking reagent Reagent B: combined primary antibody Reagent C: combined secondary antibody Reagent D1: DAB substrate (20×) Reagent D2: substrate buffer Reagent E1: fast red chromogenic reagent Reagent E2: activator Reagent E3: fast red buffer Reagent F: hematoxylin	10ml/kit (100tests) 30ml/kit (300tests)