



**CNT330** FDA

Fully automatic immunohistochemistry stainer

Innovative

Intuitive

Reliable

Economical



**Celnovte Biotechnology Co., Ltd.**

**Tel: +1-4012094076**

**Email: [info@celnovte.com](mailto:info@celnovte.com)**

**Website: [www.celnovte.com/](http://www.celnovte.com/)**

**Address: 9430 Key West Ave, Rockville, MD, 20850**





CNT330

Fully automatic immunohistochemistry stainer

3 independent slide trays with 30 slides total capacity.  
Continuous access to slide trays and reagents during run, can run multiple protocols in parallel.

## MircroStacker™

The Dedicated Detection System

The innovative MicroStacker™ technology allows for the orientation-controlled attachment of Fab' fragments of IgG on the poly-HRP core based on micro-polymer scaffolds.

The proprietary Fab' labeling methods avoids the occasional blocking of the antibody binding site during the bioconjugation process, thus increase the sensitivity of the polymer.

Biotin-free detection eliminates background staining due to endogenous biotin.



## Product Specifications

### General characteristics

Full-automatic	Baking, deparaffinization, antigen retrieval, blocking, detection, counterstain, for IHC, Multiplex IHC and ISH applications.
Intuitive software interface	Visual monitoring of reagent volume, running time, fault message.
Waste Separation	Non-toxic deparaffination solution. Separate waste containers for hazardous waste (DAB waste) and non-hazardous waste. Help labs save both time and money spent on waste disposal.
Slide Capacity	3 trays, 30 slides, 10 slides per tray;
Multifunctional	Support IHC、ISH、mIHC、ICC protocols
Turnaround Time	2.5-4 hrs
Temperature control	30 individual heating units, slides can be heated up to 100°C for antigen retrieval
Dispense volume	Dispense volume can be adjusted between 89ul - 150ul for optimal staining results.
Reagent container capacity	7ml and 30ml
Number of reagent container spots	36
Bulk liquid container	2.5L
Waste containers	2.5L / 18L
Fluid probe	PTFE coated titanium alloy

### Environmental requirements

Operating temperature	5C° ~ 35C° (41F ~ 95F)
Maximum heating energy output	1200VA
Dimensions (L x W x H)	845mm x 812mm x 1460mm
Weight	250KG

### Electrical parameters

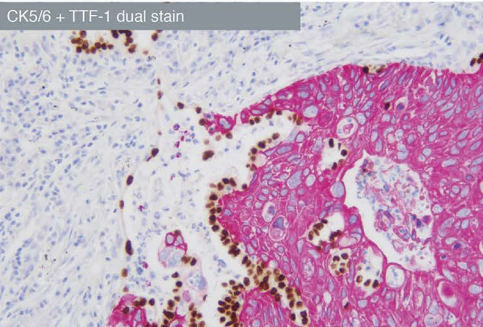
Voltage and Mains frequency	AC 110V/60Hz or AC 220V/50Hz
Power consumption	1200VA



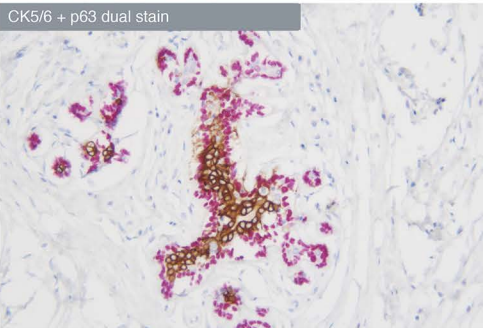
# MIHC

RTU Multiplex IHC kits available

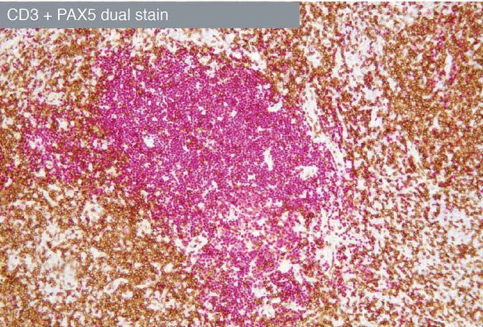
An optimized antibody cocktail technology



Lung adenocarcinoma (CK5/6 Brown, TTF-1 Red)

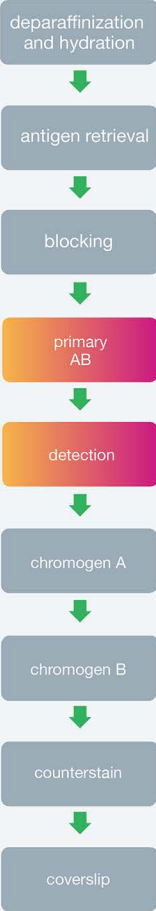


Normal breast ductal (CK5/6 Brown, p63 Red)



lymphoma (CK3 Brown, PAX5 Red)

## Staining Process



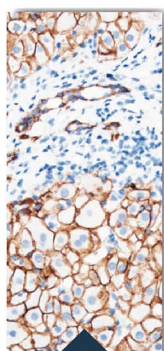
## PRODUCT FEATURES

- Full-automatic**  
Baking, deparaffinization, antigen retrieval, blocking, detection, counterstain, for IHC, Multiplex IHC and ISH applications.
- Reliable**  
Real-time monitoring and tracking; identify labels by both camera and infrared to avoid human error
- Multifunctional**  
Support IHC、ISH、mIHC、ICC protocols
- Economical**  
Dispense volume can be reduced to 80ul to reduce cost.
- High Resolution**  
The innovative MicroStacker™ polymer technology ensures sensitive & specific detection.
- Intuitive**  
Easy-to-use user interface  
Visual cues on reagent volume and program status
- Flexible**  
Ability to continuously load and unload slides during run; Multiple devices can be controlled by a central computer; Customizable staining protocols; Hospital LIS system supported
- Eco - Friendly**  
Separate waste containers for hazardous waste (DAB waste) and non-hazardous waste. Help labs save both time and money spent on waste disposal.

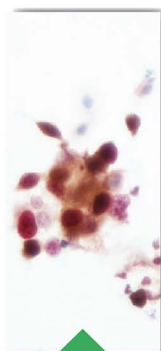


# CNT330

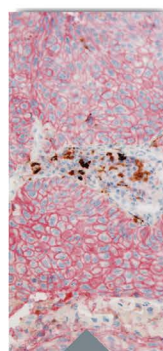
Fully automatic immunohistochemistry stainer



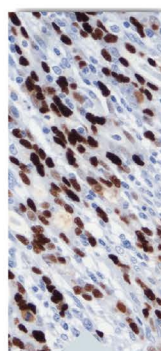
IHC



P16/Ki67



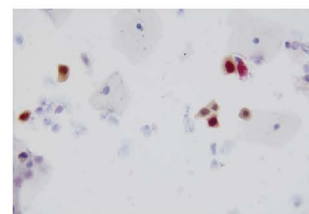
MULTIPLEX



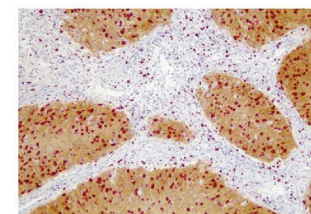
ISH

## ICC P16 & Ki67 Dual Stain Kit

Detect two antigens at the same time



P16 & Ki67 / Pap smear



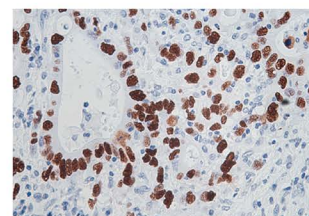
p16 & Ki67 cervical tissue section

### Staining Process

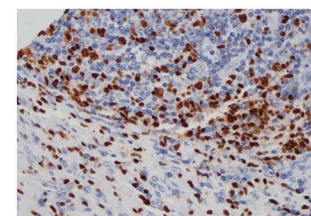


## ISH in situ hybridization Products

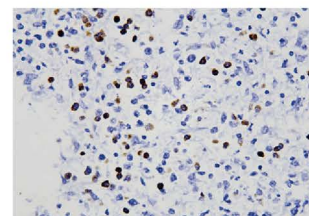
Gold standard for Epstein-Barr virus infection



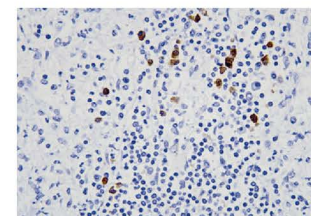
EBER Gastric Cancer



EBER Lymphoma



Kappa Probe



Lambda Probe